

勝富町ブルース 昭和49年12月22日 Sei 作詞・作曲

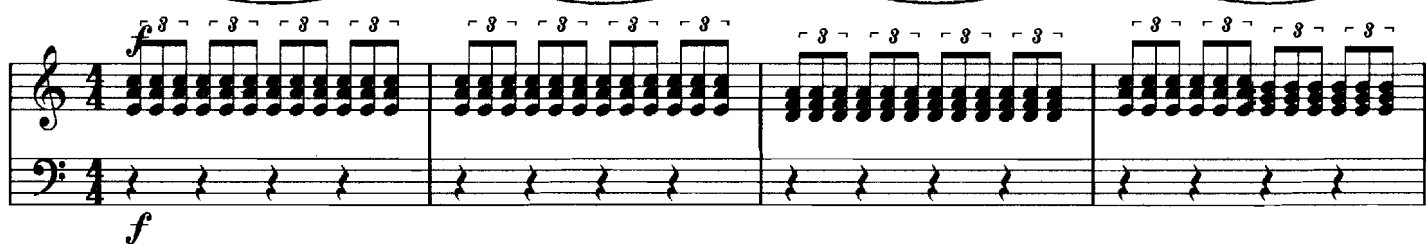
誰が呼んだかこの町は
悲しい恋の終着駅と
暗い横丁に今日もまた
恋に破れた女がひとり
ああ夜の佐世保の
勝富町ブルース

誰が呼んだかこの町は
涙の雨がそば降る町と
恋に別れはつきものだけど
降らずにおくれよ涙雨
ああ夜の佐世保の
勝富町ブルース

誰が呼んだかこの町は
未練心のさまよう町と
愛した女の思い出ばかり
つる屋台の酒を飲む
ああ夜の佐世保の
勝富町ブルース

勝富町ブルース

作詞 田辺警司
作曲 田辺警司



System 1: Treble clef, 4/4 time. The first staff contains a melodic line with eighth-note triplets and slurs. The second staff contains a dense accompaniment of eighth-note triplets. The third staff contains a bass line with quarter notes.

System 2: Treble clef, 4/4 time. The first staff continues the melodic line. The second staff includes a *ff* dynamic marking. The third staff continues the accompaniment. The system concludes with a double bar line.

System 3: Treble clef, 4/4 time. The first staff contains a series of quarter notes, likely a continuation of the bass line from the previous system.

System 4: Treble clef, 4/4 time. The first staff contains a melodic line with eighth-note triplets. The second staff contains a dense accompaniment of eighth-note triplets. The third staff contains a bass line with quarter notes.

D.S. (al Coda)

